

SA0N1S0H

SMA Female Long Connector, PCB Side Mount

V1.11

Electrical Characteristics

- Impedance: 50 Ohm
- Insulation resistance: $\geq 5000\text{M Ohm}$
- Dielectric Withstanding Voltage: 1000V RMS /50Hz
- Center Contact Resistance.: $\leq 5\text{ mohm}$
- Outer Contact Resistance: $\leq 3\text{ mohm}$
- Working Temperature: $-55^{\circ}\text{C} \sim +155^{\circ}\text{C}$



Material and Plating

Parts Name	Material	Plating
Body	HPb59-1	Au
Insulator	PTFE	-
Center conductor	HPb59-1	Au

DIMENSIONS

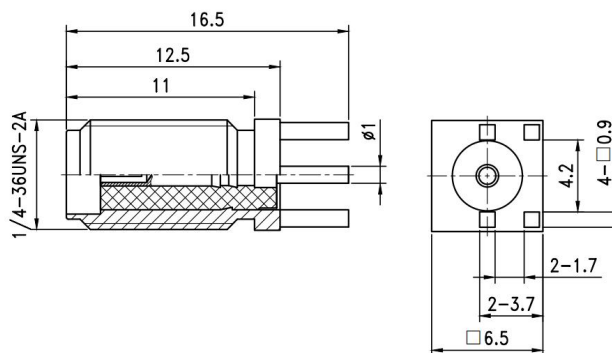


Figure 1: SA0N1S0H-1.7DA

NOMENCLATURE

SA0N1S0H — x D A 30

① ② ③ ④ ⑤

Num	Symbol	Meaning
①	Connector Type	SMA female long connector, PCB side mount
②	Pin Spacing	1.7---1.7mm, 1.2---1.2mm
③	Internal Code	Factory production code
④	Variant	A, B ,C, D - minor differences in dimensions
⑤	Plating Level	30, 18, 00; larger number means longer plating time

Table 1: Explanation of Nomenclature

ORDER INFORMATION

Part Number	Description
SA0N1S0H-1.7DA30	1.7mm pin spacing SMA female long connector with better plating, PCB side mount
SA0N1S0H-1.7DA00	1.7mm pin spacing SMA female long connector with ordinary plating, PCB side mount

Table 2: Order Information

Dorji Industrial Group Co., Ltd reserves the right to make corrections, modifications, improvements and other changes to its products and services at any time and to discontinue any product or service without notice. Customers are expected to visit websites for getting newest product information before placing orders. These products are not designed for use in life support appliances, devices or other products where malfunction of these products might result in personal injury. Customers using these products in such applications do so at their own risk and agree to fully indemnify Dorji Industrial Group for any damages resulting from improper use.