

Operation Manual for DAC04 Board

V1.00

The function of kit DAC04 is to convert UART signal to USB signal and provides the interface for customers to configure the settings of modules through PC software tool MNET_III_Configuration_tool and verify the basic function of MNET III network. This manual demonstrates how to use DAC04 in setting mode and communication mode for wireless mesh network modules DRF1110N.

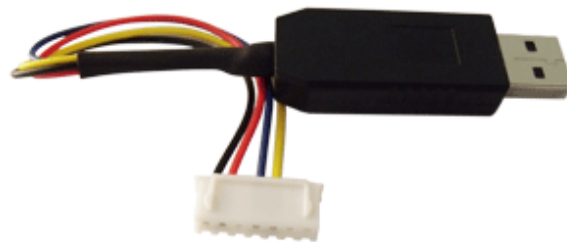


Figure 1: USB Converter Board DAC04A

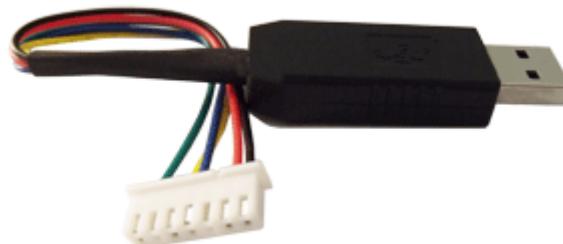


Figure 2: USB Converter Board DAC04B

1. PIN FUNCTION

| PIN | COLOR | DAC04A | DAC04B | FUNCTION |
|-----|--------|--------|--------|---------------|
| 1 | Black | GND | GND | Ground |
| 2 | Red | +3.3V | +3.3V | Power |
| 3 | --- | NC | NC | No connection |
| 4 | Blue | TX | TX | UART TX |
| 5 | Yellow | RX | RX | UART RX |
| 6 | --- | NC | NC | No connection |
| 7 | Green | NC | GND | Ground |

Table 1: DAC04 Pin Function

The 7th Pin of DRF1110N module is acted as input pin while DRF1110N module is powered

on. If the 7th is high, the module will work in normal mode; or else the module will be in configuration mode. For DAC04A board, the 7th pin is floated so the module will work in normal communication mode when it is connected PC through DAC04A. For configuring the parameters of DRF1110N module, the DAC04B must be used because the 7th pin is connected with Ground and the module will enter into setting mode. Users also can pull out the wire on 7th pin so that the function of DAC04B board will be the same as DAC04A board.

2. CONFIGURATION MODE

For the first use of DAC04 board, users need to install USB driver which can be downloaded from page (<http://www.dorji.com/pro/kits/demokits2.html>). After installing USB driver successfully, you can find driver information “Prolific USB-to-Serial Comm Port” under COM & LPT from device manager of windows operation system.

Before configuration, users need to run configuration tool first. The tool will monitor the com port and detect the plug and unplug of USB board. After DRF1110N is connected with DAC04B board in correct pin sequence, users then insert the USB board to computer.

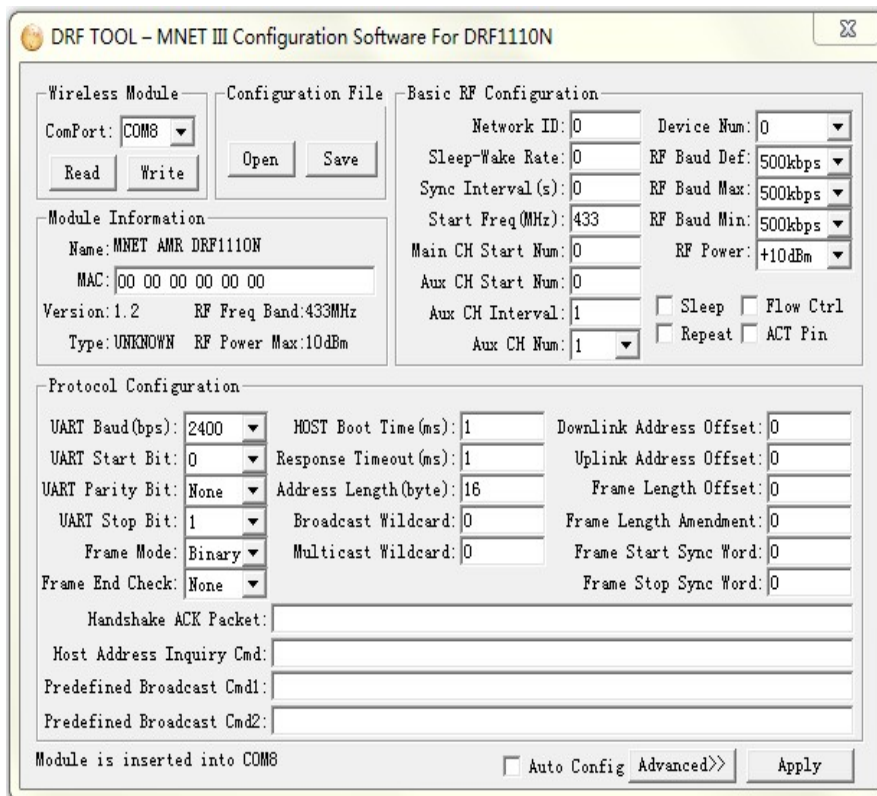


Figure 3: COM Port Being Detected

After the configuration tool detects the insertion of module, users then can use Read/Write button to check or change parameters. The pictures below show the default parameters for root module and node module.

The screenshot shows the 'DRF TOOL - MNET III Configuration Software For DRF1110N' interface. It is divided into several sections:

- Wireless Module:** ComPort: COM8, Read, Write, Open, Save buttons.
- Configuration File:** Open, Save buttons.
- Module Information:** Name: MNET AMR DRF1110N, MAC: 30 30 30 30 30 36, Version: 1.4, RF Freq Band: 433MHz, Type: NODE, RF Power Max: 10dBm.
- Basic RF Configuration:** Network ID: 0, Device Num: 1, Sleep-Wake Rate: 0, RF Baud Def: 100kbps, Sync Interval(s): 0, RF Baud Max: 100kbps, Start Freq(MHz): 432.0000, RF Baud Min: 1.2kbps, Main CH Start Num: 0, RF Power: +10dBm, Aux CH Start Num: 2, Aux CH Interval: 2, Aux CH Num: 4, Sleep, Flow Ctrl, Repeat (checked), ACT Pin.
- Protocol Configuration:**
 - UART Baud(bps): 115200, HOST Boot Time(ms): 1000, Downlink Address Offset: 1
 - UART Start Bit: 0, Response Timeout(ms): 100, Uplink Address Offset: 1
 - UART Parity Bit: None, Address Length(byte): 6, Frame Length Offset: 255
 - UART Stop Bit: 1, Broadcast Wildcard: 70, Frame Length Amendment: 255
 - Frame Mode: ASCII, Multicast Wildcard: 102, Frame Start Sync Word: 126
 - Frame End Check: None, Frame Stop Sync Word: 13
 - Handshake ACK Packet: (empty)
 - Host Address Inquiry Cmd: (empty)
 - Predefined Broadcast Cmd1: 7E 46 46 46 46 46 52 44 44 0D
 - Predefined Broadcast Cmd2: 7E 66 66 66 66 66 52 44 44 0D

At the bottom, it says 'Succeed to read the module!' and has buttons for 'Auto Config', 'Advanced>>', and 'Apply'.

Figure 4: Default Parameters for Node Module DRF1110N10N

The screenshot shows the 'DRF TOOL - MNET III Configuration Software For DRF1110N' interface, similar to Figure 4 but for a concentrator module. The 'Module Information' section is updated:

- Module Information:** Name: MNET AMR DRF1110N, MAC: 30 30 30 30 30 36, Version: 1.4, RF Freq Band: 433MHz, Type: ROOT, RF Power Max: 10dBm.

The 'Protocol Configuration' section has the following changes:

- Handshake ACK Packet: 7E 4F 4B 0D
- Predefined Broadcast Cmd1: 7E 46 46 46 46 46 52 44 44 0D
- Predefined Broadcast Cmd2: 7E 66 66 66 66 66 52 44 44 0D

The rest of the interface, including the 'Basic RF Configuration' and 'Wireless Module' sections, remains the same as in Figure 4.

Figure 5: Default Parameters for Concentrator Module DRF1110N10C

3. CONFIGURATION MODE

The basic function of network communication can be verified with default parameters except to set each node module with an unique MAC address. Users can use any popular serial port tool for testing. In this section SecureCRT® from VanDyke Software, Inc. will be used to demonstrate the communication between node module and root module.

When the module with USB board is connected to computer, the operation system will prompt which COM port is used. Or users can check the port information from the Device Manager. After that users can run SecureCRT software and click "File" from menu and choose "Quick Connect" from the drop-down list and make selection showed in the picture below:

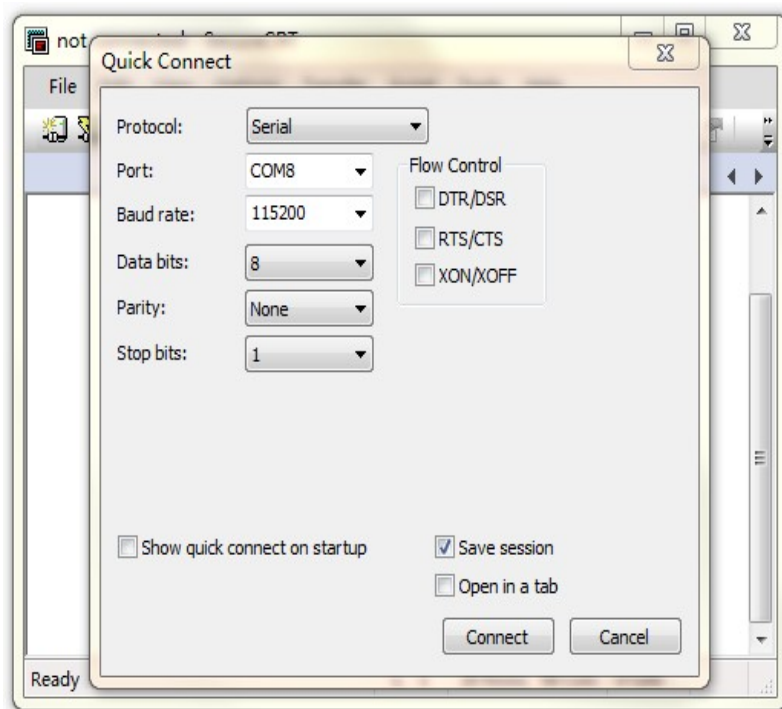


Figure 6: Configuring SecureCRT Software

After choosing the right COM port and clicking "Connect" button, the software window will display the data format at the bottom of the software window.

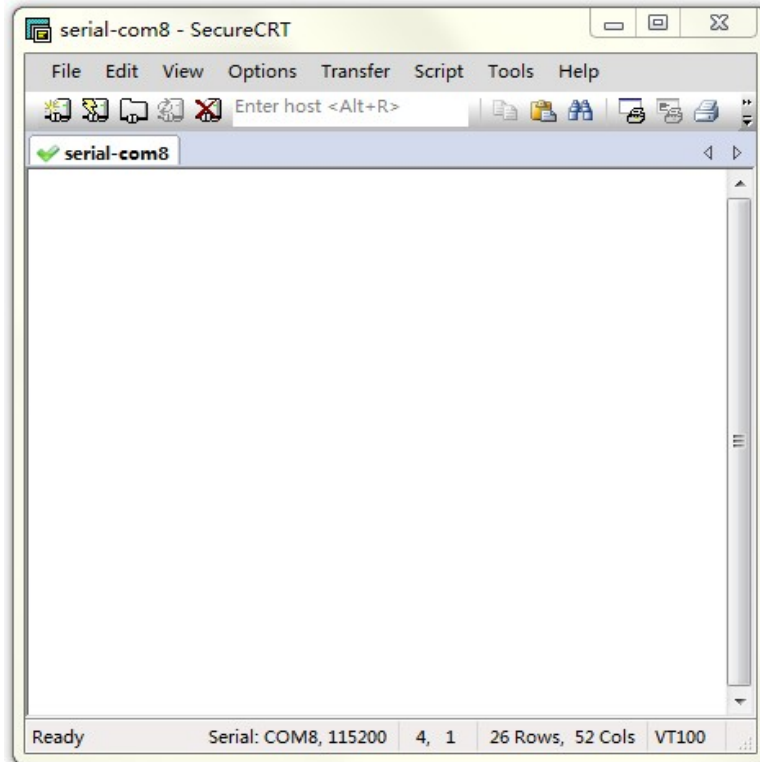


Figure 7: Connecting the right COM port with data format

Choose "Options" from menu and configure session options as showed in the picture below:

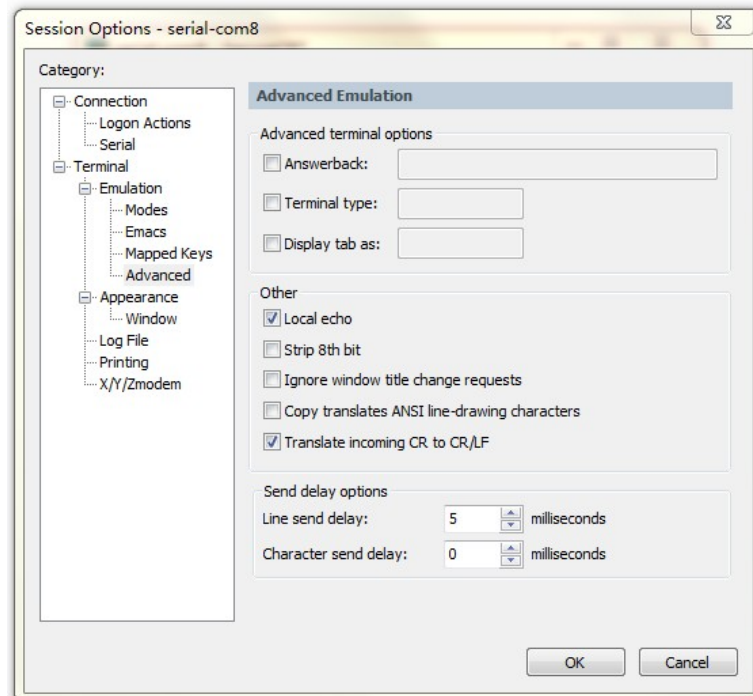


Figure 8: Advanced Emulation in Session Options

In order to better observe data flow and make communication manually between two modules, we also need open "Chat Window" from "View" in the menu. The final interface of software is showed as below:

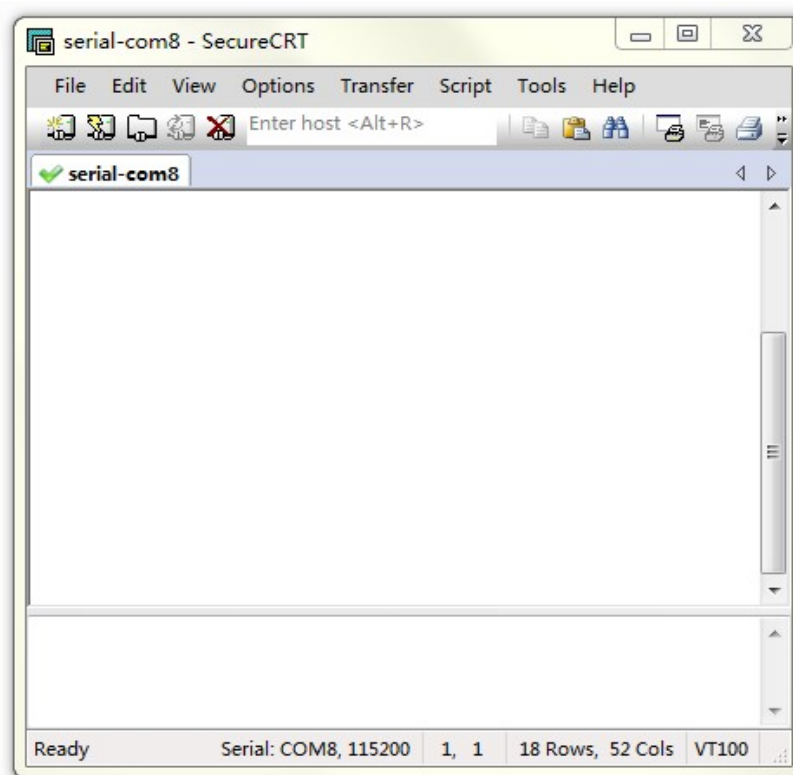


Figure 9: Final Interface of Tool

Because the shielding of SMA connector, users need to install SMA antenna for each module to enhance wireless signal. In order to avoid receive jam because of too strong signal, the distance between two neighbor nodes should be 1.5 meters at least. Certainly users also can reduce the output power to achieve closer distance. Now users can test the basic networking communication after each module is connected to computer correctly. The default frame start synchronization byte is '~' which corresponding value in hexadecimal is 0x7e. 'F' and 'f' are wildcards of broadcasting or multicasting address. The interval time of any two continuous characters should be less than 100ms; otherwise it will be regarded as the end of a data payload.

If the default parameters ("Repeat" option is checked in Basic RF Configuration block) are not changed, the root module will broadcast "~FFFFFFRDD\r" at the interval of 2 seconds after power-on. The picture below shows the default settings of root module. The "Address Length" is 6 bytes; "Frame Start Sync Word" is "126" in decimal (or 7E in hexadecimal) which means the ASCII character is "~"; "Broadcast Wildcard" is "70" (corresponding ASCII character is "F") and "Frame Stop Sync Word" is "13" (corresponding ASCII character is "\r").

| Protocol Configuration | | |
|----------------------------|-------------------------------|-----------------------------|
| UART Baud(bps): | 115200 | HOST Boot Time(ms): 1000 |
| UART Start Bit: | 0 | Response Timeout(ms): 100 |
| UART Parity Bit: | None | Address Length(byte): 6 |
| UART Stop Bit: | 1 | Broadcast Wildcard: 70 |
| Frame Mode: | ASCII | Multicast Wildcard: 102 |
| Frame End Check: | None | Downlink Address Offset: 1 |
| Handshake ACK Packet: | | Uplink Address Offset: 1 |
| Host Address Inquiry Cmd: | | Frame Length Offset: 255 |
| Predefined Broadcast Cmd1: | 7E 46 46 46 46 46 52 44 44 0D | |
| Predefined Broadcast Cmd2: | 7E 66 66 66 66 66 52 44 44 0D | |
| | | Frame Length Amendment: 255 |
| | | Frame Start Sync Word: 126 |
| | | Frame Stop Sync Word: 13 |

Figure 10: Data Package Analysis

The "Predefined Broadcast Cmd1" defines the content of broadcasting package. The value "7E 46 46 46 46 46 52 44 44 0D" in hexadecimal refers to "~FFFFFFRDD\r" in ASCII characters.

When the node module receives the broadcast package, it will remove the "Frame Start Sync Word" and "Frame Stop Sync Word" automatically and transfer the data "RDD" to the host (Here DAC04 USB board with PC) through UART interface. The SecureCRT tool on node module side will print the "RDD" periodically in the content window.

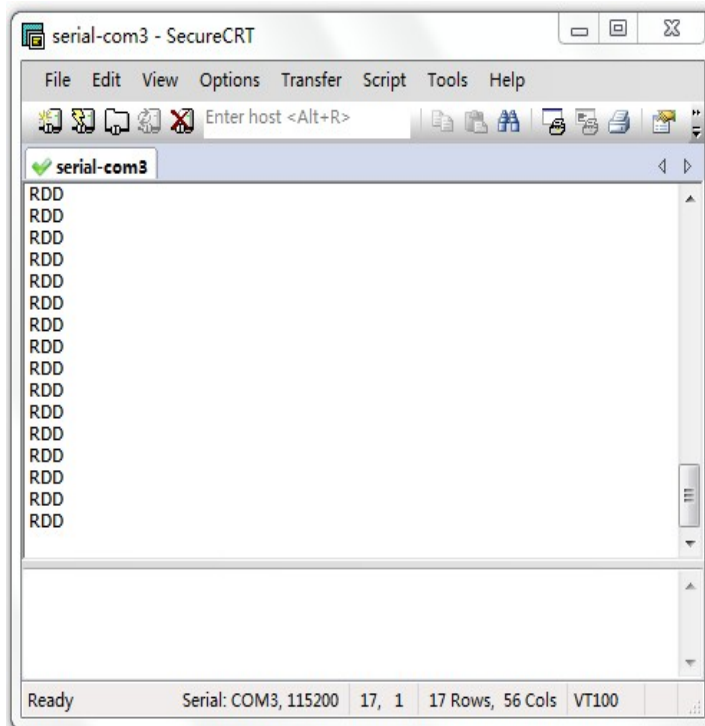


Figure 11: Node Module in Broadcast

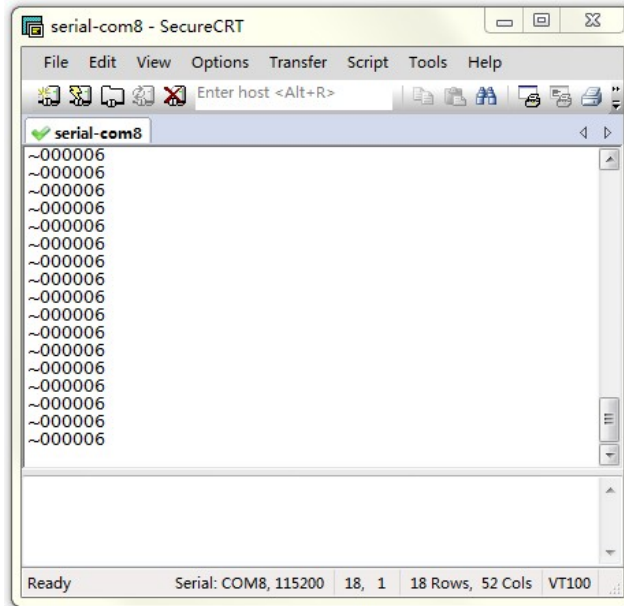


Figure 12: Root Module & One Node Module in Broadcast

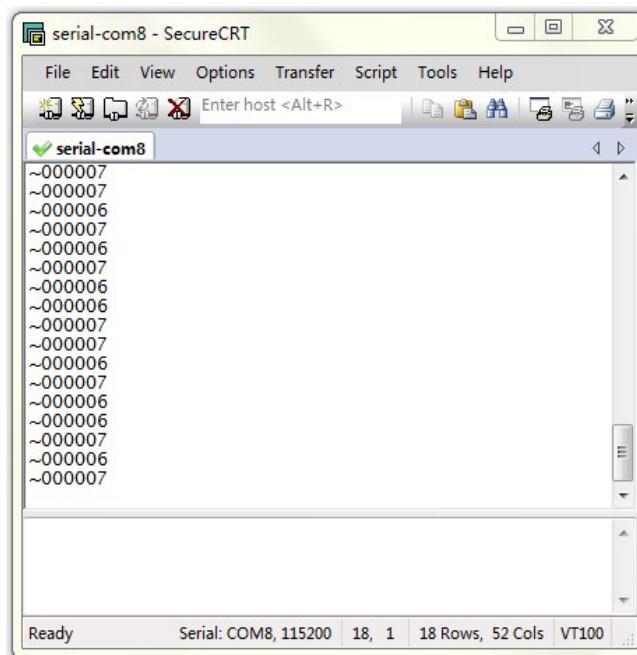


Figure 13: Root Module & Two Node Modules in Broadcast

Users can turn off the "Repeat" broadcast function of root module by inputting command "ATCO" (referring command section in DRF1110N datasheet) and the root module will respond with "ATOK" after it receives the command successfully. Users then input "~000006WWW.DORJI.COM" into the text window of SecureCRT tool and confirm it by carriage return key. When the root module recognizes the data package from SecureCRT is correct, it will respond to SecureCRT with "OK\r". When the node module receives this data package successfully through wireless link, it will display "WWW.DORJI.COM" in the window.

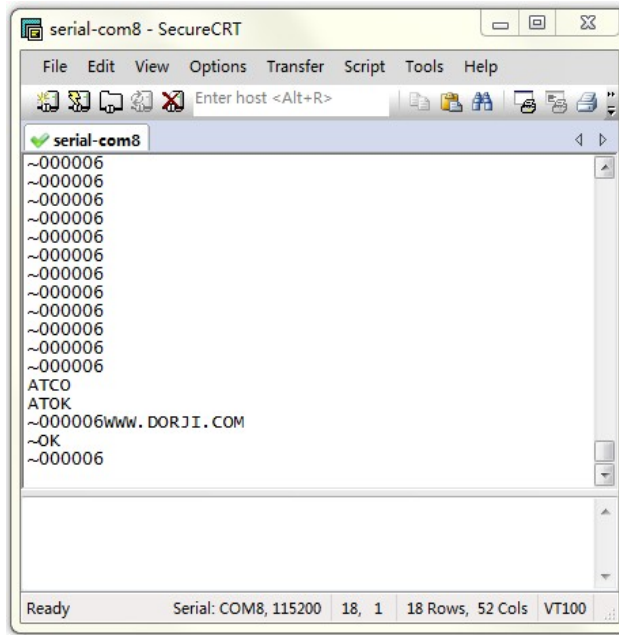


Figure 14: Root Module in Unicast Downlink

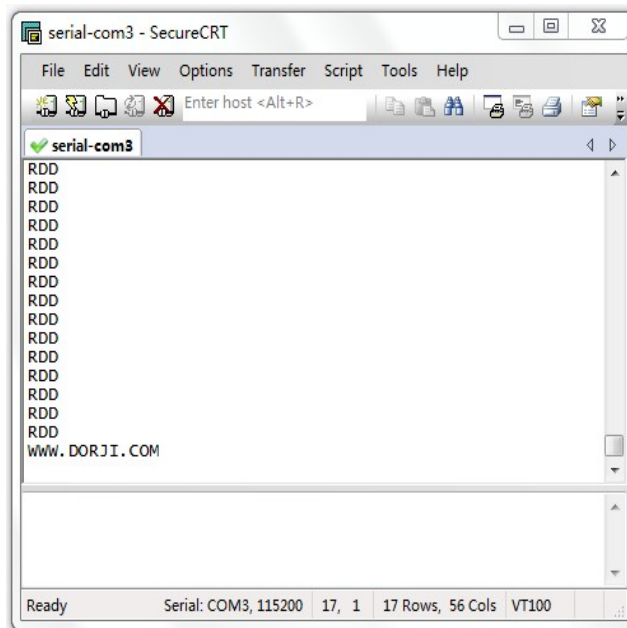


Figure 15: Node Module in Unicast Downlink

The node module also can send data to Root module. User can type "Test Unicast Uplink" in SecureCRT text window and confirm it. The root module will display the MAC address of node module following the text information "Test Unicast Uplink".

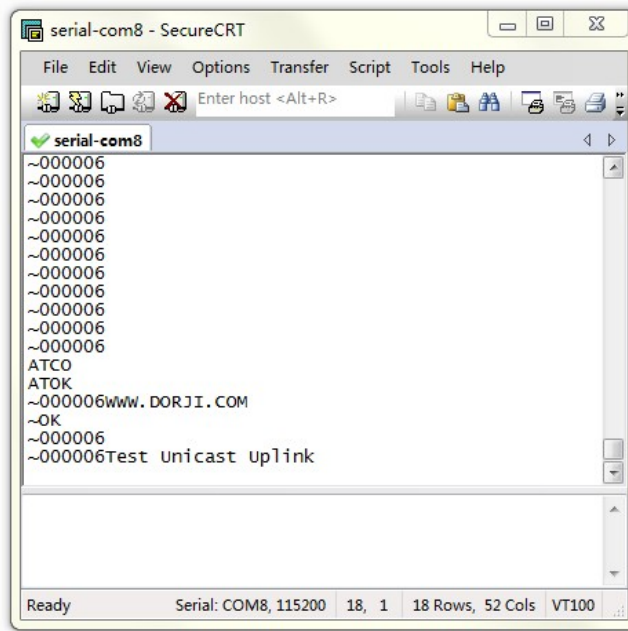


Figure 16: Root Module in Unicast Uplink

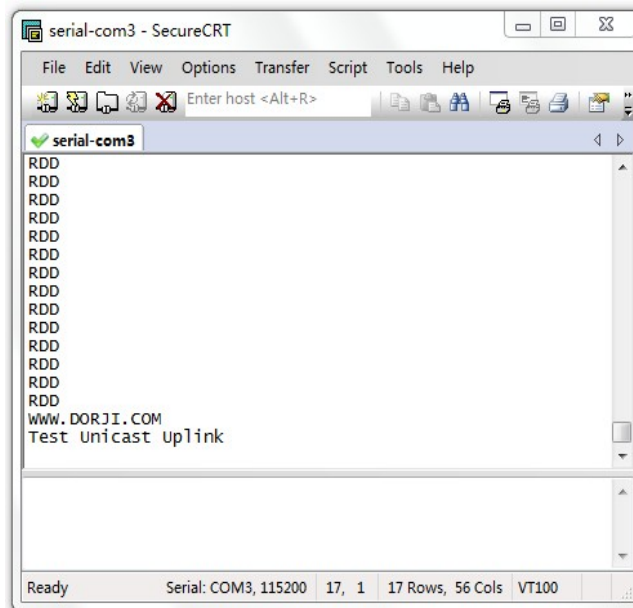


Figure 17: Node Module in Unicast Uplink

This document only verifies the basic function of network module DRF1110N. Users can make more complicated testing by combining with configuration tool MNET_III_Configuration_tool.

| | |
|---|---|
| <p>Dorji Applied Technologies A division of <i>Dorji Industrial Group Co., Ltd</i></p> <p>Add.: Xinchenuayuan 2, Dalanganlu, Longhua, Baoan district, Shenzhen, China 518109</p> <p>Tel: 0086-755-28156122 Fax.: 0086-755-28156133 Email: sales@dorji.com Web: http://www.dorji.com</p> | <p>Dorji Industrial Group Co., Ltd reserves the right to make corrections, modifications, improvements and other changes to its products and services at any time and to discontinue any product or service without notice. Customers are expected to visit websites for getting newest product information before placing orders.</p> <p>These products are not designed for use in life support appliances, devices or other products where malfunction of these products might result in personal injury. Customers using these products in such applications do so at their own risk and agree to fully indemnify Dorji Industrial Group for any damages resulting from improper use.</p> |
|---|---|